

17,240



Farmers Electric Cooperative

2000 I-30 E
Greenville, TX 75402

FILED FOR RECORD
at 1:30 o'clock P M

JAN 25 2022

BECKY LANDRUM
County Clerk, Hunt County, Tex.
By 

Friday, January 7, 2022

Office of Hunt County Commissioners
PO BOX 1097
Greenville TX 75403

Farmers Electric Cooperative Member: DRU FOUSE
Service Order Number: 2021122185

Greetings:

Farmers Electric Cooperative, Inc. is requesting permission to construct electrical power distribution facilities which will cross County Road 3503/SIGNAL RD which is located 530 ft west of CR 3509 in Hunt County, Texas.

Site location map and construction sketches are enclosed. The construction sketch details the proposed work. All road crossings will have a minimum vertical clearance of 22 feet.

If you have any questions, please contact me at any time.

Sincerely,

Cody Bland

Project Coordinator
cbland@farmerselectric.coop
Phone 903-456-1722

Submitted by Brandon Darrow
bdarrow@farmerselectric.coop
Field Engineering Coordinator

Enclosures

32060160019

NEED COUNTY
ROAD PERMIT

P1=215'
FROM CR 3509

CR 3503/SIGNAL RD

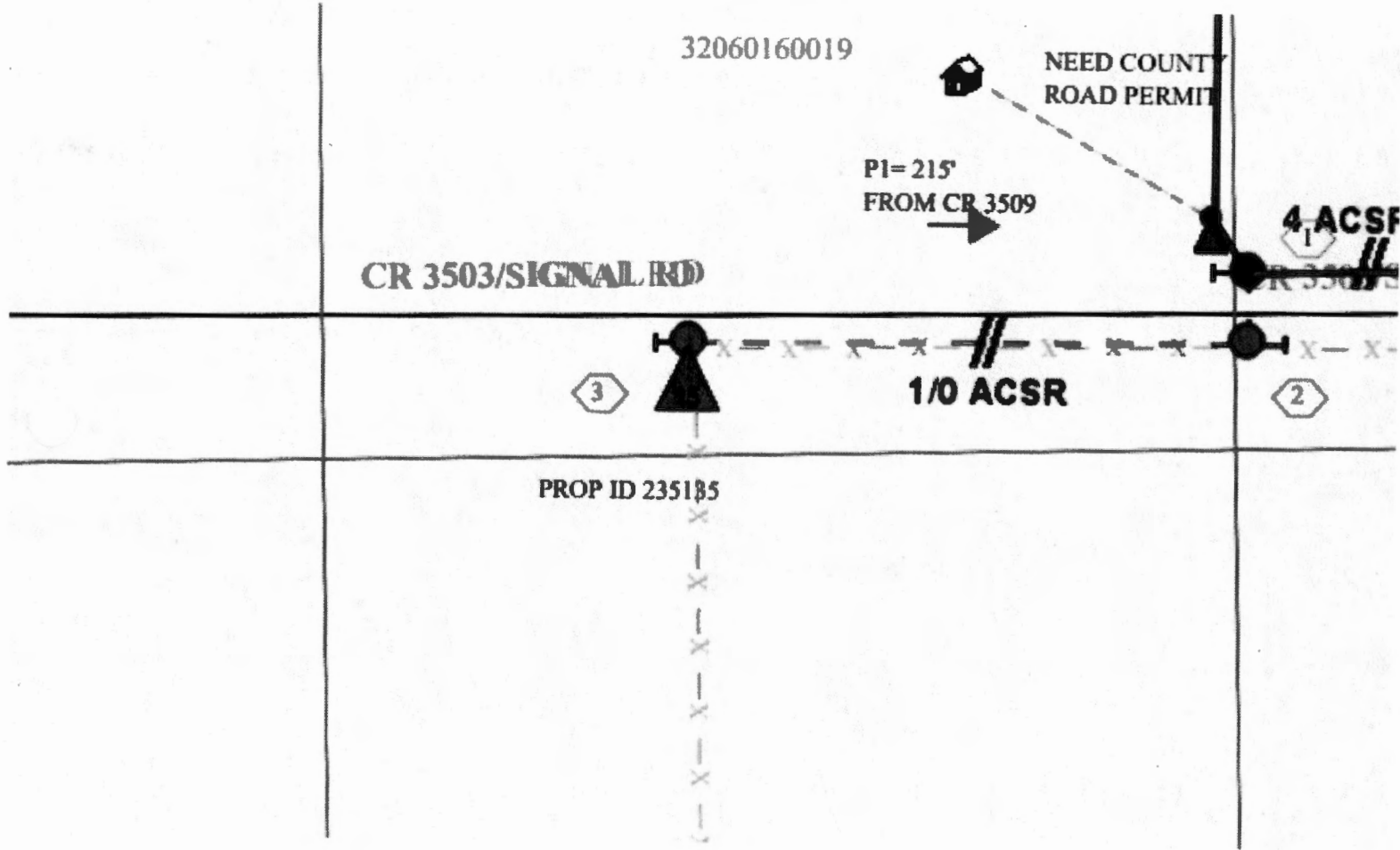
4 ACSF

3

1/0 ACSR

2

PROP ID 235185



DRU FOUSE
Service Order#
2021122185
Cross CR 3509/
Signal Rd at
Pole#024220

